



MCAA Smart Solutions
Winter 2022 Submittal
By Cerro Flow Products LLC®



OWNER: Rapid Locking Systems LLC New 80,000 sf Head Quarters 6212 Pershall Rd. Hazelwood, MO 63042 USA

RLS LLC is part of the [Marmon Plumbing & Refrigeration Group](#). RLS LLC designed, engineered, patented and developed the first press-to-connect fittings for the HVAC and refrigeration industries.
www.rapidlockingsystem.com

MECHANICAL CONTRACTOR: CE Jarrell Mechanical Contracting Co Inc. – (MCA of Eastern Missouri) 4208 Rider Trail N, Earth City, MO 63045 Jarrell is a full-service mechanical contractor founded in 1954.
www.jarrellcontracting.com



SUPPLIER: Cerro Flow Products LLC® supplied CerroPress® press connect domestic water fittings and CerroTube™ Copper Plumbing Tube. For over 80 years, Cerro Flow Products LLC® has manufactured best in class copper tubing in East St Louis IL USA. Cerro is part of the Marmon Plumbing & Refrigeration Group.

www.cerroplumbing.com

Paul Schubert, President of RLS® is "very excited to have manufacturing, office staff and training all under one roof. Jarrell has been contracted to install roof top units, ventilation, compressed air piping and plumbing. Moving to such a large space, with a fast track schedule, required a lot of design/build mechanical systems.

Greg Harty, Vice President of Jarrell Mechanical Contractors said "it's a great project for us. Something that we specialize in is the design/build process, keeping everything under one-roof so that when there is a need, it can be done in-house and not outsourced."

PROJECT PARAMETERS: Jerry L. Miles, Marmon Plumbing & Refrigeration Group Project Manager said "RLS has grown dramatically which created an urgent need for expansion." After selecting a location off Interstate I-270 and near Lambert International Airport in St. Louis MO, an aggressive construction schedule of 5 months was set to convert an 80,000 SF white box into manufacturing, warehouse, offices, R&D, training center and showroom.

CerroPress® press-to-connect fittings for domestic water were chosen for speed and labor savings compared to sweat / solder joints. The Domestic Water System was installed quickly and without a need for flame, so fire watch and special permits weren't necessary. CerroPress® copper fittings, in sizes ½" to 2 ½" were installed throughout the facility which helped beat the substantial completion date.



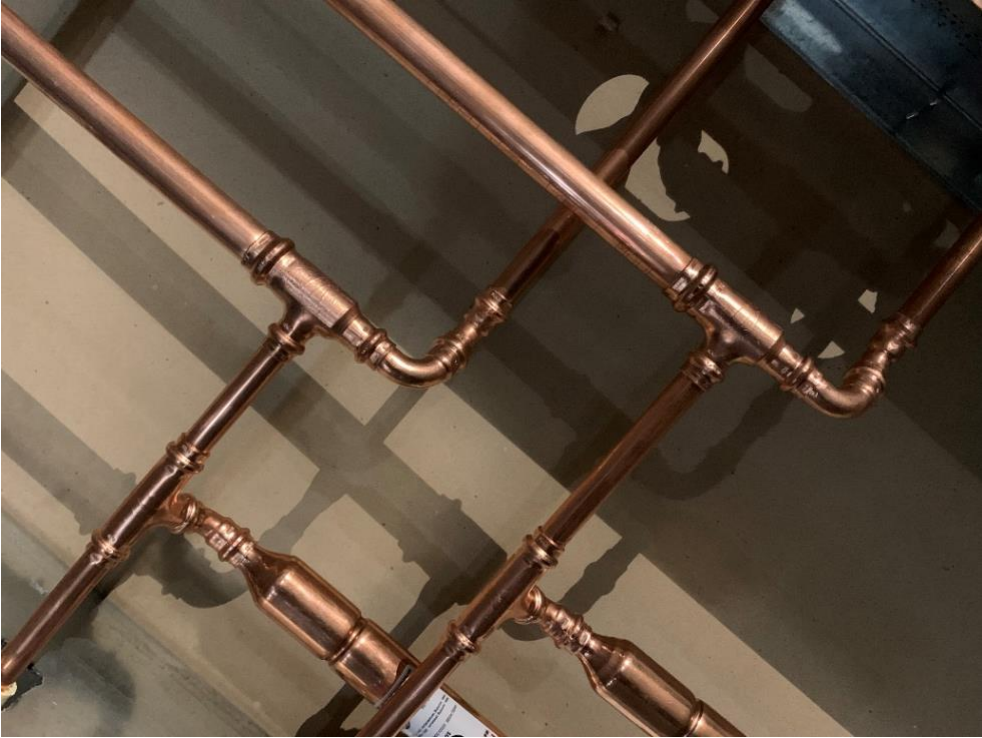
The RLS project has several single user and shared bathrooms, that all share wet walls with kitchens and break rooms creating congestion in 3 ½" and 5 ½" studs. Jarrell Contractors elegantly solved conflicts of the domestic water system with sanitary drains by using CerroPress® 45° Elbows and Reducing Tees. The advantage of press-to-connect fittings is the ability to achieve watertight joints in tight spaces. (below)



The Domestic Water System Design for this project required a Tee with the Branch leg larger than the Inlet or Outlet legs. This particular size is not standard in the fittings industry. This challenge was solved by using CerroPress Bushing Reducers to accomplish the engineer's design. (below)



Jarrell's installation of CerroTube™ and CerroPress® fittings by Cerro Flow Products LLC® was a work of art.





CerroPress® press-to-connect fittings are now available for contractors preferring flameless, mechanical press joining. More professionals each day are choosing to join ASTM B88 seamless copper water tube (K, L, & M) copper tubing with press fitting technology. CerroTube can now be connected with CerroPress® fittings to create a system which is fast and economical while building on the reliable, proud tradition and reputation of Cerro Flow Products LLC®.

Manufactured to precise dimensions for perfect fit, CerroPress® fittings use high performance chloramine resistant O-Rings, hard-temper and 99.9% pure copper to achieve best-in-class test results and performance.

For more information please contact:

Cerro Flow Products LLC / 3000 Mississippi Ave East St Louis IL 62206 / P: 888-237-7611

www.cerroplumbing.com

www.cerropress.com

sales@cerroflow.com



Submitted by Bob Dienstbach – Cerro Product Development Manager bdienstbach@cerroflow.com